

SCOUT

MODEL • AGENCY

SARAHFINA N. IN TOWN

HEIGHT 176 cm BUST/WAIST/HIPS 82/63/92 cm EYES brown HAIR dark brown SHOES 39 LOCATION Basel CH



SCOUT

MODEL • AGENCY

SARAHFINA N. IN TOWN

HEIGHT 176 cm BUST/WAIST/HIPS 82/63/92 cm EYES brown HAIR dark brown SHOES 39 LOCATION Basel CH

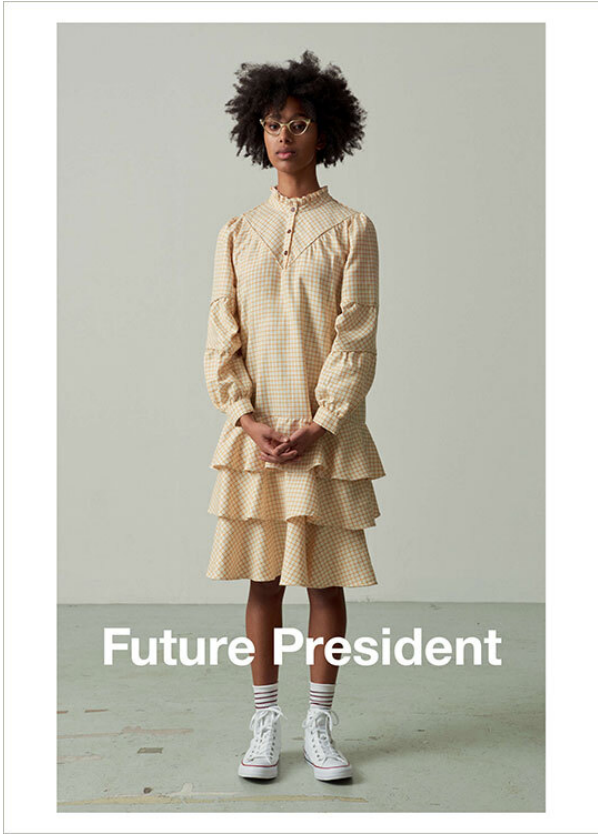


SCOUT

MODEL • AGENCY

SARAHFINA N. IN TOWN

HEIGHT 176 cm BUST/WAIST/HIPS 82/63/92 cm EYES brown HAIR dark brown SHOES 39 LOCATION Basel CH

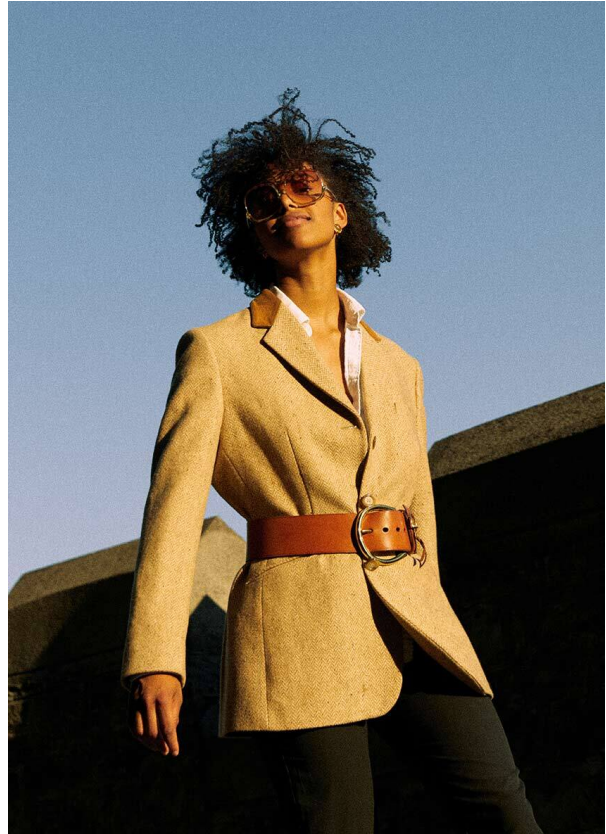


SCOUT

MODEL • AGENCY

SARAHFINA N. IN TOWN

HEIGHT 176 cm BUST/WAIST/HIPS 82/63/92 cm EYES brown HAIR dark brown SHOES 39 LOCATION Basel CH



SCOUT

MODEL • AGENCY

SARAHFINA N. IN TOWN

HEIGHT 176 cm BUST/WAIST/HIPS 82/63/92 cm EYES brown HAIR dark brown SHOES 39 LOCATION Basel CH



mode



FOTOS: MARCEL A. MAYER PHOTOGRAPHER || MODEL: SCOUT MODEL ZÜRICH
LOCATION: KUNSTRAUM DORNBIEN || STYLING: CONNIE JIELG || HAIR & MAKE-UP: KATRIN BURTSCHER

WEISSBING

SCOUT

MODEL • AGENCY

SARAHFINA N. IN TOWN

HEIGHT 176 cm BUST/WAIST/HIPS 82/63/92 cm EYES brown HAIR dark brown SHOES 39 LOCATION Basel CH

