

# SCOUT

MODEL • AGENCY

## ANASTASIA V. MAIN

HEIGHT 178 cm BUST/WAIST/HIPS 80/61/91 cm JEANS 24/25 EYES green HAIR brown SHOES 40 LOCATION Paris FR





# SCOUT

MODEL • AGENCY

**ANASTASIA V.** MAIN

HEIGHT 178 cm BUST/WAIST/HIPS 80/61/91 cm JEANS 24/25 EYES green HAIR brown SHOES 40 LOCATION Paris FR





# SCOUT

MODEL • AGENCY

## ANASTASIA V. MAIN

HEIGHT 178 cm BUST/WAIST/HIPS 80/61/91 cm JEANS 24/25 EYES green HAIR brown SHOES 40 LOCATION Paris FR



LESS



LESS



# SCOUT

MODEL • AGENCY

ANASTASIA V. MAIN

HEIGHT 178 cm BUST/WAIST/HIPS 80/61/91 cm JEANS 24/25 EYES green HAIR brown SHOES 40 LOCATION Paris FR





# SCOUT

MODEL ● AGENCY

## ANASTASIA V. MAIN

HEIGHT 178 cm BUST/WAIST/HIPS 80/61/91 cm JEANS 24/25 EYES green HAIR brown SHOES 40 LOCATION Paris FR



Lammleder-Jacke mit  
aufgesetzten Taschen:  
Gant, ca. 300 Euro  
Armatoren Top aus  
Seiden-Mix: Filippa K,  
ca. 225 Euro  
Hose im  
Cargo-Style mit Dum-  
mizug: Marc O'Plato,  
ca. 230 Euro  
Ring:  
Christ Kette: Chingong  
Ballenins: Unützer

37

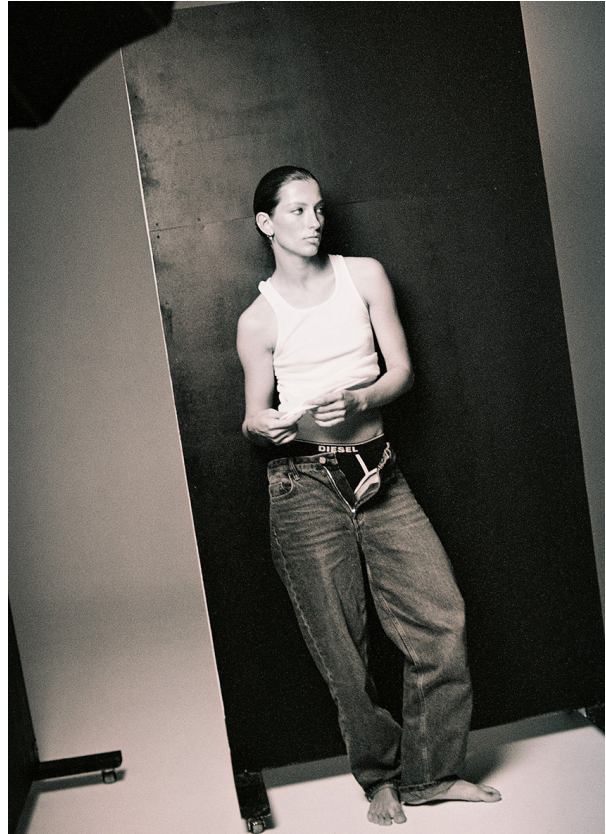


# SCOUT

MODEL • AGENCY

## ANASTASIA V. MAIN

HEIGHT 178 cm BUST/WAIST/HIPS 80/61/91 cm JEANS 24/25 EYES green HAIR brown SHOES 40 LOCATION Paris FR



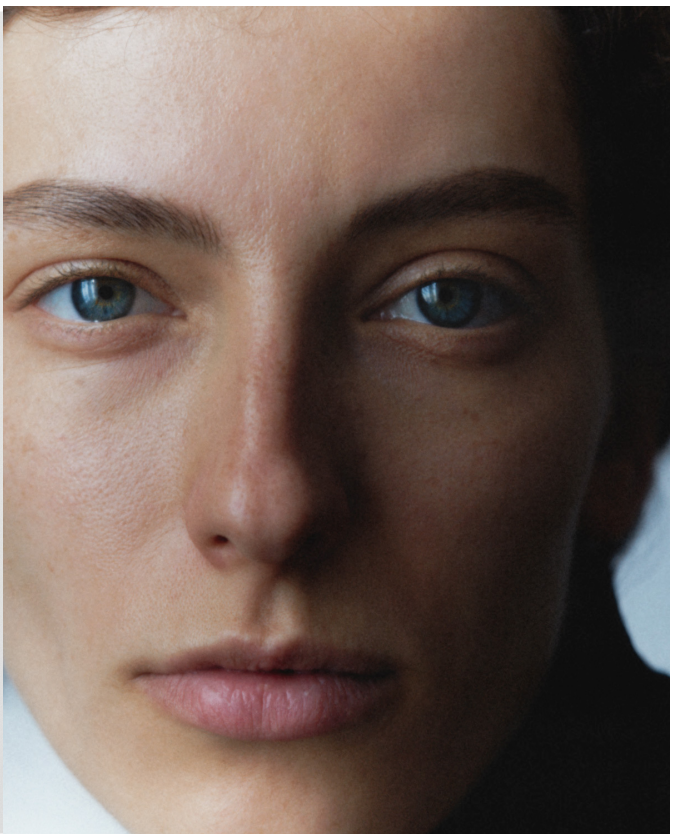


# SCOUT

MODEL • AGENCY

**ANASTASIA V.** MAIN

HEIGHT 178 cm BUST/WAIST/HIPS 80/61/91 cm JEANS 24/25 EYES green HAIR brown SHOES 40 LOCATION Paris FR





# SCOUT

MODEL • AGENCY

## ANASTASIA V. MAIN

HEIGHT 178 cm BUST/WAIST/HIPS 80/61/91 cm JEANS 24/25 EYES green HAIR brown SHOES 40 LOCATION Paris FR

