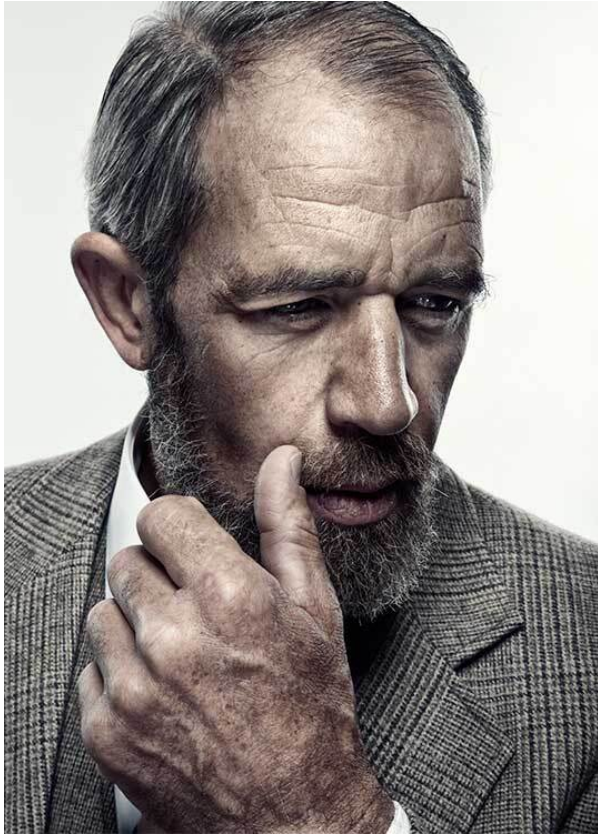


SCOUT

MODEL • AGENCY

PETER G. SILVER

HEIGHT 189 cm BUST/WAIST 100/92 cm EYES green/brown HAIR salt&pepper SHOES 45/46 LOCATION Sissach CH



SCOUT

MODEL • AGENCY

PETER G. SILVER

HEIGHT 189 cm BUST/WAIST 100/92 cm EYES green/brown HAIR salt&pepper SHOES 45/46 LOCATION Sissach CH



“Ich bin tief verbunden mit meiner Heimat – wie ein Baum, der seine Wurzeln hin zum Wasser streckt”

Peter Graf (54), Sissach BL, Landwirt und Model



Strickpullover 490 Fr. und Wollmantel 1590 Fr., beides von Ralph Lauren bei Gosmann. Hut von Strasser 180 Fr. bei VMC.

scout/02 21/19 81



SCOUT

PETER G. SILVER

MODEL • AGENCY

HEIGHT 189 cm BUST/WAIST 100/92 cm EYES green/brown HAIR salt&pepper SHOES 45/46 LOCATION Sissach CH

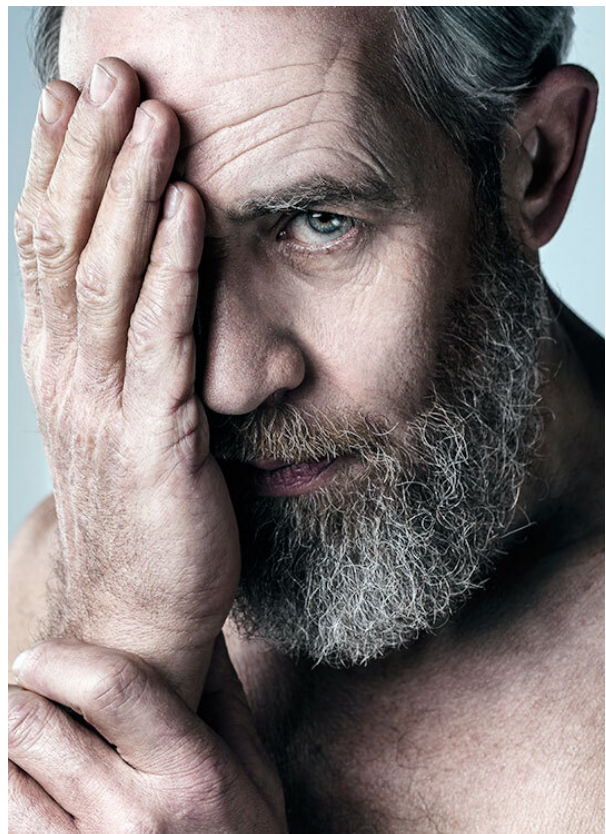


SCOUT

MODEL • AGENCY

PETER G. SILVER

HEIGHT 189 cm BUST/WAIST 100/92 cm EYES green/brown HAIR salt&pepper SHOES 45/46 LOCATION Sissach CH



SCOUT

MODEL • AGENCY

PETER G. SILVER

HEIGHT 189 cm BUST/WAIST 100/92 cm EYES green/brown HAIR salt&pepper SHOES 45/46 LOCATION Sissach CH



SCOUT

MODEL • AGENCY

PETER G. SILVER

HEIGHT 189 cm BUST/WAIST 100/92 cm EYES green/brown HAIR salt&pepper SHOES 45/46 LOCATION Sissach CH



SCOUT

PETER G. SILVER

MODEL • AGENCY

HEIGHT 189 cm BUST/WAIST 100/92 cm EYES green/brown HAIR salt&pepper SHOES 45/46 LOCATION Sissach CH



SCOUT

MODEL • AGENCY

PETER G. SILVER

HEIGHT 189 cm BUST/WAIST 100/92 cm EYES green/brown HAIR salt&pepper SHOES 45/46 LOCATION Sissach CH

